

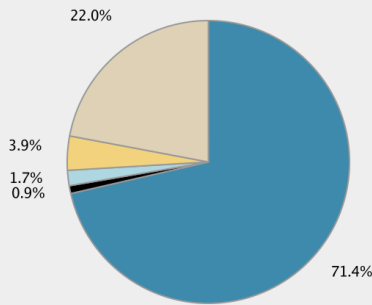
Incoming Mail Summary

csma-1-m100v.itc.rwth-aachen.de

01 Oct 2022 00:00 to 31 Oct 2022 23:59 (GMT +01:00)

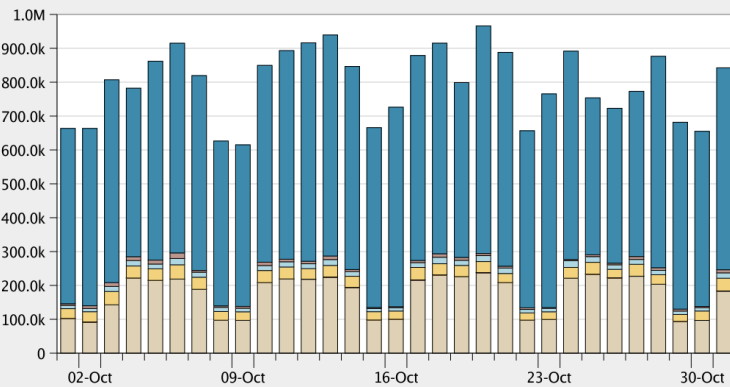
Data in time range: 100.0 % complete

Incoming Mail Summary



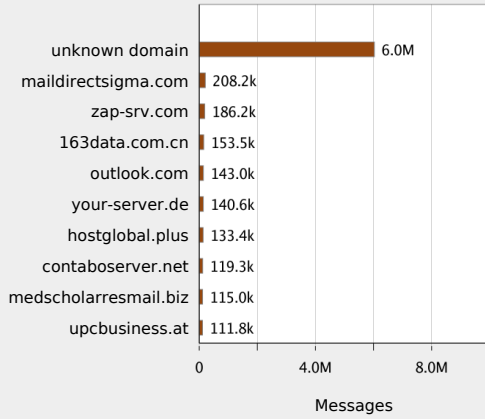
Message Category	%	Messages
Stopped by IP Reputation Filtering	71.4%	17,607,343
Stopped by Domain Reputation Filtering	0.9%	219,247
Stopped as Invalid Recipients	1.7%	431,099
Spam Detected	3.9%	960,971
Virus Detected	0.0%	791
Detected by Advanced Malware Protection	0.0%	0
Messages with Malicious URLs	0.0%	0
Stopped by Content Filter	0.0%	3,187
Stopped by DMARC	0.0%	0
S/MIME Verification/Decryption Failed	0.0%	0
Total Threat Messages:	78.0%	19,222,638
Marketing Messages	0.0%	0
Social Networking Messages	0.0%	0
Bulk Messages	0.0%	0
Total Graymails:	0.0%	0
S/MIME Verification/Decryption Successful	0.0%	0
Clean Messages	22.0%	5,435,029
Total Attempted Messages:		24,657,667

Incoming Mail Over Time

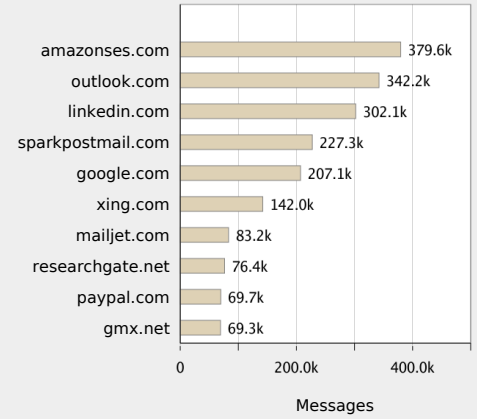


- Stopped by IP Reputation Filtering
- Stopped by Sender Reputation Filtering
- Stopped as Invalid Recipients
- Spam Detected
- Virus Detected
- Detected by Advanced Malware Protection
- Messages with Malicious URLs
- Stopped by Content Filter
- Stopped by DMARC
- Marketing
- Social Networking
- Bulk
- S/MIME Verification/Decryption Failed
- S/MIME Verification/Decryption Successful
- Clean Messages

Top Domains by Total Threat Messages



Top Domains by Clean Messages



Top Domains by Graymail Messages

No Data found